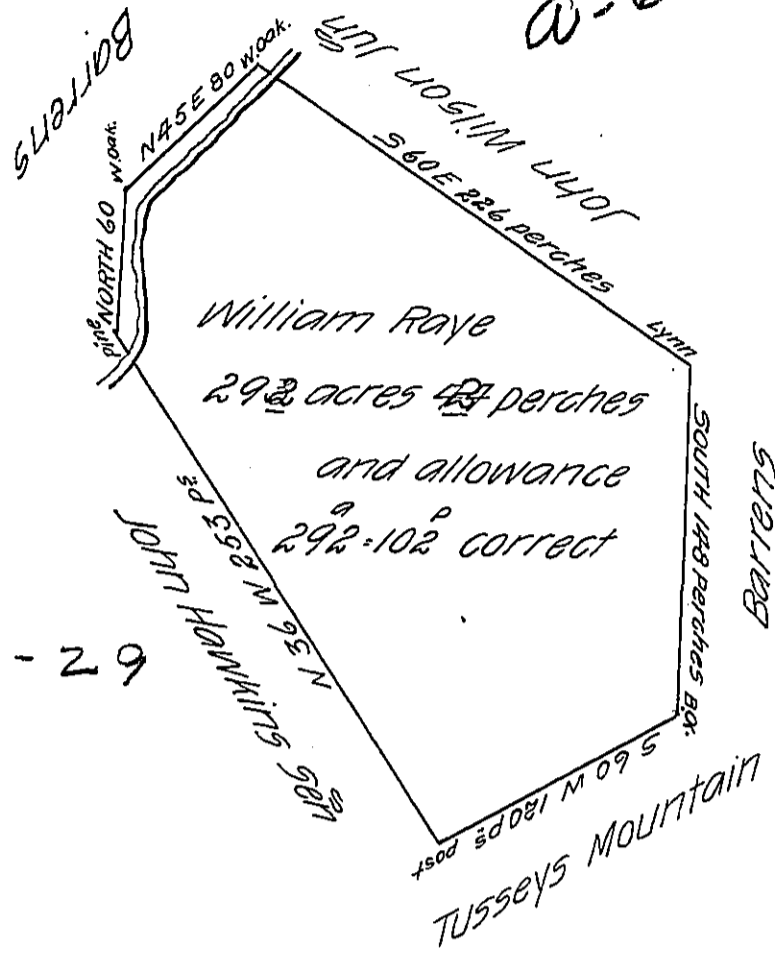


D-64-98

D-6-29



A draught of a tract of land situate at the foot of Tusseys Mountain in the County of Bedford containing two hundred and ninety ^{TWO} ~~five~~ acres and one hundred and ^{TWO} ~~forty~~ ~~four~~ perches and the usual allowance of six acres per cent for roads and highways surveyed June 1 1767 for William Raye in pursuance of a warrant dated Augt 1 1766 by Richard Tea as appears by his drafts and field works which I have examined and find them to be correct JULY 29 1783

To John Lukens Esq.
Surveyor General

George Woods D.S.

IN TESTIMONY that the above is a copy of the original remaining on file in the Department of Internal Affairs of Pennsylvania, made conformably to an Act of Assembly approved the 16th day of February, 1833, I have hereunto set my Hand and caused the Seal of said Department to be affixed at Harrisburg, this thirtieth day of JULY 1906

Isaac D. Brown
Secretary of Internal Affairs.